



2022
PROFESSIONAL



21, Markarian Building, Street 401, Mkalles
T: +961 1 694 194 M: +961 76 444 660
P.O.Box 55240 Sin El Fil, Lebanon
E-mail sales@mghotelsupplies.com
f MG SUPPLIES @ MG.SUPPLIES

GLOW

Dear customers, dear friends,,

two difficult years lie behind us. Hotel and restaurant lockdowns around the world have not made everyday business easy for any of us.

But we believe that the situation will ease worldwide in 2022 and that people will enjoy travel, culinary delights and company again.

So we look into the future positively and I am pleased, after a one-year break, to present to you the new Zieher main catalogue 2022.

We were using the calm times last year for new developments and present proudly - among others - our new buffet system "Glow".

With "Glow" you can stage your products as a radiant centrepiece. But you will also find proven design and quality products in the catalogue, valued by top restaurants and hotels from all over the world.

We hope you enjoy browsing and look forward to a joint successful new year.

Yours sincerely



Dominik Zieher

Excellence since 1986 - Exclusive design since 2006

In the year 2006 we designed the first items ourselves and placed them on the market.
Since that time developing and implementing exclusive design objects has been our calling.
On this page we show a couple of the most important creations of the past years.

Design, innovation and quality are our mission!

The Zieher Design History



The timeline features a central map of Europe and a horizontal axis with years from 2006 to 2020. Key design objects are shown in boxes connected to the timeline:

- 2006:** A tall, slender wooden serving rack on a circular base.
- 2009:** A white ceramic bowl filled with fresh fruit and vegetables.
- 2011:** A wooden serving tray with compartments for bread and small appetizers.
- 2013:** A glass bowl containing a colorful fruit salad.
- 2014:** A set of three modern, illuminated metal stands for serving drinks.
- 2015:** A large, shallow metal serving dish on a tripod stand, filled with ice and drinks.
- 2017:** A large, tiered black serving stand with multiple levels for food.
- 2018:** A set of small, round appetizers on a white tray.
- 2019:** A set of three elegant wine glasses.
- 2020:** A set of wine glasses, including a decanter and a glass filled with red wine.

WWW.ZIEHER.COM
PHOTOGRAPHY: www.die-lichtzeichner.de

China, glass
and more!





plate "Sombre"

china, matt black, round, flat, organic shape

item	Ø in cm	PU
3967.20S	20	12 pcs
3967.25S	25	12 pcs
3967.30S	30	6 pcs



plate "Sombre"

china, matt black, round, deep, organic shape

item	Ø / height in cm	PU
3968.20S	20/4	12 pcs



bowl "Sombre"

china, matt black, round, organic shape

item	Ø / height in cm	content in l	PU
3969.15S	15/4.5	0.3	12 pcs

i Due to the special glaze, irregularities such as running marks or inclusions can appear on the underside of the items. These deliberately contribute to the organic, rustic charm of the items and are unavoidable.

"Sombre" - dark accents!

The "Sombre" series combines the robustness of porcelain with the individual charm of unique pieces made of ceramic.

The deep dark hue of the matt glaze deliberately focuses on subtle irregularities and puts the served dishes into the centre of attention. The organic shape creates a subtle tension. It fits into any environment without losing its individuality. In combination with other series and materials, it becomes possible to set new accents ever and anon.

Particularly resistant hard-paste porcelain enables the production of comparatively thin and filigree parts, which are provided with an intensely matt black glaze. The five-part small series consists of three flat and one deep plate as well as a bowl for side dishes or salads.



The glass series VISION is available on pages 184 to 187.

The glasses of the VISION series are available on page 181.



Due to the reduced waves, the version made of grey glass offers significantly more space for staging dishes. A stylish extension for more creative latitude!

Glass cloches in different sizes are available on page 173.



glass cloche

borosilicate glass, clear, handblown, handmade, for glass plate "Pulsar" item 5190

item	Ø in cm	height in cm
4880.18	18.5	approx. 29-32
4880.26	26	approx. 41-44

platter/plate "Pulsar"

glass, 6 mm thick, dark grey, Ø inside 18 cm, suitable for cloches items 4880.18 and 4880.26

item	Ø in cm
5190	31.5

"Pulsar" - Sparking Impulses!

This gourmet plate, predestined for appetizers, intermediate courses or desserts, excels through its exceptional shape and thrills the beholder by the exotic touch it has been awarded by its designers.

The surface is reminiscent of the playful waves created on a smooth lake after a stone's throw. The viewer's gaze purposefully wanders to the centre of the concentric design and this way, the served dishes come straight to the fore. Be it for selectively arranged sauces or dips, crunchy crisp caramelised nuts or edible flowers, even the wave troughs of the plate's rim offer numerous possibilities to stage dishes effectively. "Pulsar" is made of high-quality hard porcelain in a surprisingly soft composition and is available glazed in glossy white or in matt black.

The fitting cloches are based on the extraordinary design of the "Nostalgic" glasses from the VISION series. The language of design of the wine glasses recurs in the cloches that are mouth-blown as well - the perfect combination for a balanced and harmonic staging on the table. These exclusive covers are available in two sizes: The small version precisely spans the inner circle, the bigger one additionally covers the first wave.



4507.02PB + 5482.10/5482.15

Design: Grace Liu, Jian Ping Li



plate/platter "Pulsar"

china, black, matt, Ø inside 10.5 cm, suitable for cloche 5482.10 and 5482.15, in black gift box

item	Ø in cm
4507.02PB	29.5

plate/platter "Pulsar"

china, white, Ø inside 10.5 cm, suitable for cloche 5482.10 and 5482.15, in black gift box

item	Ø in cm
4507.01PB	29.5

glass cloche

crystalline glass, transparent, handblown, for a utility space of Ø 9.5 cm or Ø 14.5 cm respectively

item	Ø in cm	height in cm	PU
5482.10	10.5	approx. 13	2 pcs
5482.15	15.5	approx. 19.5	1 pc



glass cloche "Cuspis"

borosilicate glass, transparent, handblown, star-shaped ball handle

item	for plate/bowl	Ø in cm	height in cm
4940.08	4389.09	8.5	12.5
4940.10	4389.11	10.5	14.5
4940.25	4389.25PB	25	32.5



plateau plate/small bowl "Cuspis"

china, white, inside and useable area (plateau Ø approx. 6 cm/8 cm) glazed, outside biscuit, also useable as a bowl

item	Ø in cm	height in cm	content in l
4389.09	9	3	0.1
4389.11	11.5	3.5	0.18



plateau plate/bowl "Cuspis"

china, white, inside and useable area glazed, outside biscuit, useable on both sides, for cloches items 4940.25 and 4940.10 (bottom side), in black gift box

item	Ø in cm	height in cm	content in l
4389.25PB	25	2.8	0.8



The grey glass platters are available on page 80.



Design: Michael Schwarz Müller

Borosilicate glass in its most beautiful shape!

The primary design element of the series "Cuspis" is a glass ball studded with fine spikes. The cloches with fitting porcelain plateau plates/bowls are available in three sizes, the inspiration for their shaping was derived from the nut of the oak tree. The star-shaped handle is located at the top of the cloches and allows for an uncomplicated handling of these classy covers. The unglazed outside of the porcelain bowls is reminiscent of acorn caps. The bowls can be used on both sides. When used as a plateau plate, the dish moves closer to the guest. Used as a bowl, it offers space for gravies, sauces and more while the filigree glass cloche protects the presented delicacies and puts them in the limelight at the same time.



If the item is used upside down as a plate, the two rings on the plate's underside can be used to separate the prepared dish into different sections, the cloches of the "Cuspis" series may also be used with it (4940.10 on the inner ring, 4940.25 on the outer ring).



Bedded on glass, wood ...



glass pillow "Donna"
glass, satined, in black gift box

item	l x w x h in cm
5446.01PB	16.5x11x3



wooden pillow "Donna"
solid walnut, oiled, not dishwasher-safe, 4 rubber feet

item	l x w x h in cm
4772.33PB	33.5x22.5x7

Please note:



The "Donna" wooden cushion is not dishwasher safe. Please do not immerse in water!

Whether used as a fruit bowl, as a place to keep accessories or as sculptural decoration - "Donna" seduces in every material!



Design: Wilma Greim

... or china

"Donna"



Platters and chargers made of hardened black glass are available on page 54.

The elegant porcelain-pillows "Donna", which are inspired by a woman's curved back, are definitely not made to sleep on, but offer an ideal presentation area for high-end dishes or present a sculptural place to keep various items of everyday life. The glass cushion also cuts a fine figure when used as a soap dish. The larger version made of porcelain sets the scene for every dish in a surprising way and forms an exciting contrast to conventional porcelain shapes.

Design: Wilma Greim



Food: Grzegorz Parczewski
www.facebook.com/grzegorz.parczewski.1

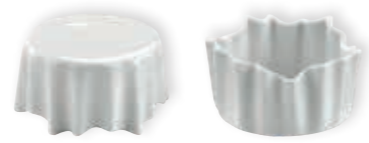


porcelain pillow "Donna"
white, not dishwasher-safe

item	l x w x h in cm
4461.02	33x22x7



"DressCoat"



plateau plate "DressCoat"

china, white, useable area (plateau): Ø 7.5 cm, also useable as a bowl

item	Ø / height in cm	content in l	PU
4386.01	9/4.5	0.1	12 pcs



plateau plate "DressCoat"

china, white, useable area (plateau): Ø 10.5 cm, also useable as a bowl

item	Ø / height in cm	content in l	PU
4386	13/6.5	0.4	6 pcs



plateau plate "DressCoat"

white china, useable area (plateau): Ø 15 cm, also useable as a bowl

item	Ø / height in cm	content in l	PU
4387	17/8.5	0.85	3 pcs



plateau plate "DressCoat"

white china, useable area (plateau): Ø 19.5 cm, also useable as a bowl

item	Ø / height in cm	content in l	PU
4388	22/6.5	0.9	3 pcs

"DressCoat"



"DressCoat" was created by the glass and porcelain designer Nadine Podewski. The elegant language of design is reminiscent of set tables, the creation of the plates and bowls respectively is characterised by the apparently free falling drapery of table cloth. This creates a seemingly weightless, almost floating effect. The slightly concave shaped surface offers space for artfully decorated dishes and reliably avoids the sloshing of sauce.

"DressCoat" is available in four different sizes. Besides the main application as a plateau plate, each item can also be used as a bowl. The falling folds add up to an exciting game of shapes - in particular if used as a bowl.

With "DressCoat" you will dish up delicacies!



The etagere 2212.30 is available on page 94.

Food: Pâtisserie Walter
(www.patisserie.de)



Design: Nadine Podewski



"Modul"



The "Modul" trays, bridges and spoon rests made of walnut and melamine are available on pages 134 to 138.



plate "Modul"

china, white, square, flat, item 4385.22 fits base trays "Modul" made of walnut and melamine

item	l x w in cm	PU
4385.22	22x22	6 pcs
4385.27	27x27	4 pcs

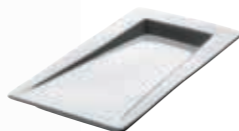
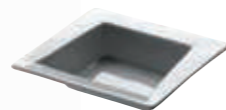


plate "Modul"

china, white, rectangular, flat, for base trays "Modul" made of walnut and melamine

item	l x w in cm	PU
4383	22x11	12 pcs



bowl "Modul"

china, white, square, deep, for base trays "Modul" made of walnut and melamine

item	l x w in cm	content in l	PU
4381	11x11	0.07	12 pcs

"Velo"



plate "Velo"

china, white, surface glazed, underside biscuit

item	l x w x h	PU
4505	27x20x2.8	3 pcs



plate "Velo"

china, black, matt, surface glazed, underside biscuit

item	l x w x h in cm	PU
4505.01	27x20x2.8	3 pcs

Design: Itamar Harari

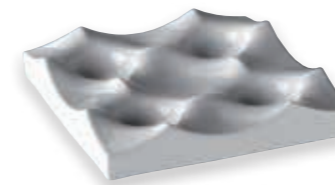
homesolute
award 2012



glass bowl/cloche

clear glass, handblown, for platter "Collina" item 4503

item	Ø / height in cm	content in l	PU
5418	9/6	0.2	6 pcs



platter "Collina"

china, white, not dishwasher-safe, with 4 deepenings, with 4 rubber feet (enclosed in the pack)

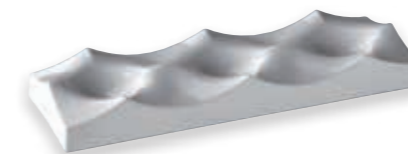
item	l x w x h in cm
4503	24.5x24.5x4.5



glass

clear glass, for platter "Collina" item 4504

item	Ø / height in cm	content in l	PU
5380	7.5/10.5	0.32	6 pcs
5381	7.5/6	0.18	6 pcs



platter "Collina"

china, white, not dishwasher-safe, with 3 deepenings, with 4 rubber feet (enclosed in the pack)

item	l x w x h in cm
4504	36.5x12.5x4.5

"Collina"



Design: Wilma Greim

"Collina" provides almost unlimited possibilities. Whether in the lobby or on the buffet, for the presentation of fruit and pastry or as an exclusively decorative element, this series is versatile. "Collina" is perfectly suitable for various antipasti and delicacies from the patisserie, but also a selection of fruit in the Hotel room can be beautifully put in the limelight.

The possibilities when considering private use are numerous, too. "Collina" may be used as a fruit bowl, but it is also suitable as a means to neatly organise objects of everyday life, such as the mobile phone or keys.

In order to protect the sensitive surfaces of furniture, every plate comes with feet made of rubber, which can be stuck on if needed. The rigorously geometrical structure permits the assembling of several plates, which allows to enlarge the effective area of the platters in both length and width. When looking at the surface from the side, the arrangement has the appearance of a desert landscape arbitrarily formed by the wind.





bowl "Catering de Luxe"
china, white

item	Ø / height in cm	content in l	PU
4281.01	12/6.5	0.25	12 pcs
4281	14/7.5	0.35	6 pcs
4281.02	19/10	1.0	6 pcs
4281.03	24/12.5	2.0	2 pcs
4281.04	28/14.5	3.5	2 pcs



fondue-Set, 2 parts
china, white, for tealights
upper part: Ø 6.3 cm, 7 cm high, 0.14 l content
lower part: Ø 6.3 cm, 7 cm high

item	total height in cm	PU
4359	13.5	6 pcs



small skewer "Flame"
stainless steel 18/0, matt

item	length in cm	PU
1939.04	9.5	24 pcs



plate "oro79"
china, golden surface, with foot, not dishwasher-safe, not suitable for microwave and combi steam oven

item	l x w x h in cm
4564.26	26.5x26.5x1.5



plate "oro79"
china, golden surface, with foot, not dishwasher-safe, not suitable for microwave and combi steam oven

item	l x w x h in cm
4565.35	35x14x1.5



china ball "oro79"
china, outside golden, 4 parts (3 bowls: 0.5 l / 0.6 l / 0.25 l content + lid), not dishwasher-safe, not suitable for microwave and combi steam oven,

item	Ø in cm	height in cm
4563	15.5	15.8



"oro79" is pure luxury

This exclusive miniseries captivates by its extraordinary surface with its golden mother-of-pearl look. A quartered ball allows serving a variety of food in an entirely new way.

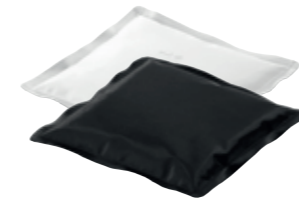
"oro79" offers exceptional service for the most demanding guests!





Stay cool!

Serving chilled food is primarily a technical challenge with certain dishes or intermediate courses. With Zieher's two-coloured cooling pads, this necessity can be met in a sophisticated way, also in terms of visual appearance. The wrapper made of black respectively white nylon fabric appears classy and unobtrusive. The pads are filled with gel which remains shapeable, even when frozen and thus allows an adjustment to the tableware used.



cooling pack

nylon, black/white, non-toxic cooling gel

item	l x w in cm
5663.20	20x20



The cooling pads are also applicable on the buffet. More information is available on page 44 and 45.



Like the shell hides the pearl, the porcelain bowl "Cave" conceals precious delicacies within its hard shell. At first sight, this porcelain piece only partly reveals its interior. "Cave" consists of intricately worked hard porcelain and captures by its soft shape and the velvety haptics of the unglazed outside. Touching the cave-shaped bowl, it feels almost like a palm stone made of white gold, having a soft appearance with delicious contents. "Cave" is predestined for an use at cocktail and hors d'oeuvres receptions or at the flying buffet. The miniature bowl can be carried comfortably and perfectly fits in the palm of the hand.



bowl "Cave"

biscuit china, white, inside glazed, opening: Ø approx. 8 cm, in black gift box

item	Ø in cm	height in cm	PU
4375.01PB	approx. 11	7	1 pc



The etagere "Falcon" is available on page 64 and 65.



plate "Rough!"

china, matt black, round, structured surface

item	Ø in cm	PU
4567.24	24	4 pcs



coup plate "Catering"

china, matt black, round, flat

item	Ø in cm	PU
3954.23S	23	12 pcs



coup plate "Catering"

china, white, round, flat

item	Ø in cm	PU
3954.21	21	12 pcs

The glass version of the "Cave" bowl is available in two sizes. The soft tinge of this grey glass, which is manufactured in a traditional hand-blowing process, stages the content of these shapely objects. They offer the fitting framework for fruit, nuts and nibbles as well as for tastefully arranged pasta or salad on a solemnly decorated table. The content of the bowls remains protected by the shell of glass, the amply dimensioned opening seduces to snap at a chance. These unique items also enthuse as a place to keep all kinds of accessories.



glass bowl "Cave"

dark grey, round, handblown

item	Ø in cm	opening Ø in cm	height in cm
4815.18	approx. 18	approx. 14	approx. 11.5
4815.24	approx. 24	approx. 19	approx. 16.5



Design: Wilma Greim

"Unique"



glass plate "Unique"
glass, white marbled, bottom satined, round

item	Ø in cm	PU
5178.16	16.5	6 pcs
5178.21	21	6 pcs
5178.28	28	6 pcs
5178.32	32	3 pcs



glass bowl "Unique"
glass, white marbled, outside satined, round

item	Ø / height in cm	content in l	PU
5180.10	10/6	approx. 0.2	6 pcs
5180.15	14.5/7.5	approx. 0.65	6 pcs



glass bowl "Unique"
glass, white marbled, outside satined, round

item	Ø / height in cm	content in l	PU
5182.16	16/5	approx. 0.67	6 pcs
5182.21	21/8	approx. 2.0	4 pcs
5182.27	26.5/8	approx. 2.75	4 pcs

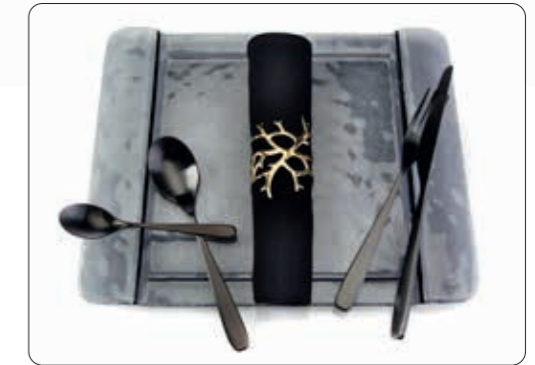


The plates and bowls of the "Unique" series are made of clear glass, which is awarded an inimitable character by adding white glass components. This creates individual streaks and swirls, which assemble to highly exciting patterns. The underside of the plates as well as the outside of the bowls are blasted, which results in satined optics and pleasant haptics.

"Unique" presents - in shape and decor - a real counterpart to the uniform character of industrially manufactured mass products and proves to be as unique as its users.

"Unique" is produced in centrifugal casting. Besides the individual decor, this production method entails a slight variation of size, strength and shape of the items, also some air inclusions are possible. That's exactly what awards these unique pieces their special charm.

Trays made of grey glass



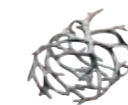
glass platter/tray
glass, structured, dark grey, rectangular, with handles

item	version	l x w x h in cm	PU
5021.01	1/1 GN	53x32.5x2	3 pcs
5021.02	1/2 GN	32.5x26.5x2	4 pcs
5021.03	2/4 GN	53x16x2	4 pcs



napkin ring "Reef"
pewter, real gold coated (18 ct), surface smooth, food-safe, not dishwasher-safe

item	Ø in cm	length in cm	PU
2317G	5.5x3.5	7.5	2 pcs



napkin ring "Reef"
pewter, surface smooth, food-safe, not dishwasher-safe

item	Ø in cm	length in cm	PU
2317	5.5x3.5	7.5	2 pcs



More items of the "Reef" series are available on pages 70 to 73.

"Reef"



The glass platter is available on page 168.



chopstick/knife rest "Flex"

borosilicate glass, transparent, handmade

item	l x w in cm	height in cm	PU
4886	8x2.3	approx. 2.3	2 pcs



chopsticks

borosilicate glass, satined, handmade, please note the safety instructions on each pack (not suitable for children)

item	length in cm	PU
4885	21.5	1 set (2 parts)



glass tray

glass, dark black, useable for buffet, flying buffet or as a tray

item	l x w x h in cm	version
5142.34	35x35x2	square
5141.50	51x35x2	rectangular



NEW

sushi plate

natural slate, approx. 10 mm thick, food-safe (sealed), not dishwasher-safe, with rubber feet

item	l x w x h in cm
2550	25x25x2



charger plate

special hardened safety glass, 4 mm thick, rectangular, rounded edges, polished rim, dishwasher-safe, rubber feet included (adhesive), underside scratch-proof

item	version	l x w in cm
1668.10	black glass	30x18
1670.10	white glass	30x18



The napkin ring of the "Reef" series is available on page 165.

The glass platters are available on page 169, the series "Cuspis" on page 152.

More platters made of special hardened safety glass are available on pages 54 to 58.



glass plate
glass, 4 mm thick, dark grey, round, with spiral structure

item	Ø in cm	height in cm	PU
5177.20	20	2,5/4,5	6 pcs
5177.25	25	3/6	6 pcs
5177.28	28	3,5/7	4 pcs



glass platter/plate
glass, 6 mm thick, dark grey, with spiral structure

item	l x w in cm	PU
5168.14	approx. 14x10,5	6 pcs
5168.25	approx. 25x20,5	6 pcs
5168.30	approx. 30,5x25	4 pcs



glass platter/plate
glass, 6 mm thick, dark grey, longish, with spiral structure

item	l x w in cm	PU
5169.31	approx. 31x12,5	6 pcs
5169.38	approx. 38x15,5	4 pcs
5169.41	approx. 41,5x12,5	4 pcs



buffet bowl
glass, 8 mm thick, dark grey, oblong, structured

item	l x w x h in cm
5703	96x29x10



glass plate
glass, 8 mm thick, dark grey, rectangular, with the structure of tree bark

item	l x w in cm	PU
5702	40x22	2 pcs



glass plate
glass, 8 mm thick, dark grey, oval, with the structure of tree bark

item	l x w in cm	PU
5700	33x24	3 pcs



glass bowl
glass, 8 mm thick, dark grey, oval, with the structure of tree bark

item	l x w x h in cm	PU
5701	26,5x19,5x4,5	3 pcs



Further buffet bowls made of grey glass are available on pages 78 to 83.



The glass trays are available on page 80.



The glass/china bowls are available on page 265.



glass platter

glass, structured, transparent, rectangular, four divisions

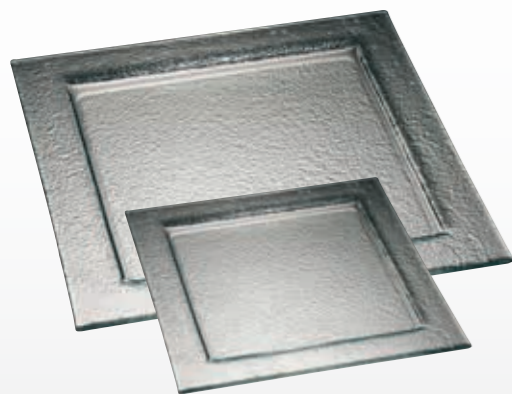
item	l x w in cm
5084	33x12



glass platter

glass, structured, transparent, rectangular

item	l x w in cm
5064	33x12



glass platter

glass, structured, transparent, square

item	l x w in cm
5063	30x30
5063.50	50x50



The bread/pastry bowl is available on page 90.



caviar set

clear glass, square, big bowl: 14 cm x 14 cm x 8.5 cm, 0.67 l content, small bowl: 8 cm x 8 cm x 4.5 cm, 0.1 l content

item	l x w x h in cm	PU
5347	14x14x10	1 set (3 parts)



glass bowl

clear glass, square

item	l x w x h in cm	content in l	PU
5308.08	8x8x4.5	0.14	6 pcs
5308.11	11x11x6	0.3	6 pcs
5308.20	20x20x11	1.8	1 pc



glass carafe

clear glass

item	Ø in cm	height in cm	content in l
5352	9	31	1.0



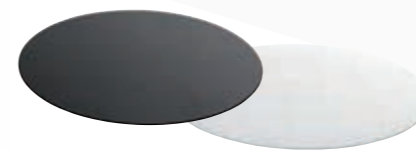
charger plate

hardened clear glass, 6 mm thick, round, rim polished and deburred

item	Ø in cm
4999	33



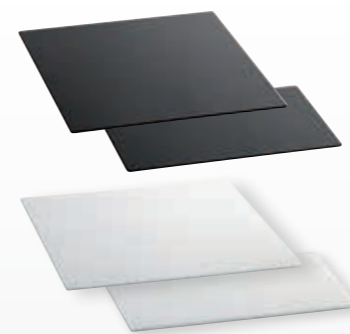
"DressCoat" is available on pages 156 and 157.



charger plate

special hardened safety glass, 4 mm thick, round, polished rim, dishwasher-safe, rubber feet included (adhesive), underside scratch-proof

item	version	Ø in cm
1669.33	black glass	33
1671.33	white glass	33



charger plate

special hardened safety glass, 4 mm thick, rounded edges, polished rim, dishwasher-safe, rubber feet included (adhesive), underside scratch-proof

item	version	l x w in cm
1668.06	black glass	34x34
1668.10	black glass	30x18
1670.06	white glass	34x34
1670.10	white glass	30x18



The double-walled bowl item 4956.01 is available on page 215.

Charger plates



Suitable for cold and dry food. More "Capiz" items are available on page 76.



charger plate "Capiz"

shell, ivory-coloured, organically shaped, resin-coated, not dishwasher-safe

item	Ø in cm	PU
7100.36	36	2 pcs

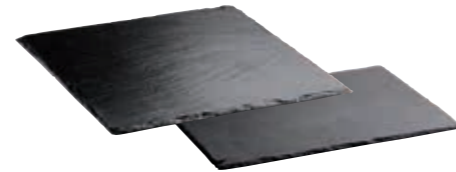
The cloche item 4982.09 is available on page 176.



buffet platter

hardened glass, grey transparent, square, irregularly coloured in a cloudy look, underside structured, dishwasher-safe, scratch-proof

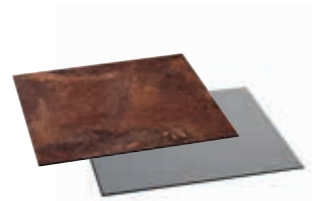
item	l x w in cm	thickness in mm
8008.06	34x34	5



charger plate, slate

natural slate, approx. 5 mm thick, food-safe (sealed), not dishwasher-safe, with rubber feet

item	version	l x w in cm
2543.30	square	30x30
2544.30	rectangular	30x20



charger plate

laminated plastic, 8 mm thick, black intermediate ply, break-proof, scratch-proof, dishwasher-safe, antistatic, square, deburred edges, rounded corners

item	version	l x w in cm
8007.06	rusted look	34x34
8006.06	dark grey	34x34



charger plate, glass

glass, structured, dark grey, rectangular, with handles

item	l x w x h in cm	PU
5021.02	32.5x26.5x2	4 pcs



Cloches
of some
other kind!



glass cloche
borosilicate glass, transparent, handblown, handmade, for coaster "Solid" item 4700.01

item	Ø in cm	height in cm
4982.09	9	approx. 14-16



glass cloche
borosilicate glass, transparent, handblown, handmade, for coaster "Solid" item 4700

item	Ø in cm	height in cm
4982	13	approx. 20-23



coaster "Solid"
walnut, food-safe sealed, not dishwasher-safe, for glass cloches

item	Ø / height in cm	Ø inner circle in cm
4700.01	15.3/2	9.3



coaster/glass insert
clear glass, 4 mm thick, round, edge polished and deburred, with 4 transparent silicone feet, for coaster "Solid" item 4700

item	Ø in cm	PU
5244	13	6 pcs



coaster "Solid"
walnut, food-safe sealed, not dishwasher-safe, for glass cloches

item	Ø / height in cm	Ø inner circle in cm
4700	22 / 2	13.3



glass cloche
borosilicate glass, transparent, handblown, handmade, for coaster "Solid" items 4734...

item	Ø in cm	height in cm
4880.18	18.5	approx. 29-32
4880.22	22.5	approx. 35-38
4880.26	26	approx. 41-44
4880.30	30	approx. 48-51



coaster/glass insert
clear glass, 4 mm thick, round, edge polished and deburred, with 4 transparent silicone feet

item	Ø in cm	for coaster "Solid" item
5244.17	16.7	4734.01
5244.21	20.7	4734.02
5244.24	24.2	4734.03
5244.28	28.2	4734.04



coaster "Solid"
walnut, food-safe sealed, not dishwasher-safe, stackable, for glass cloche items 4850, 4851, 4852 and 4880... and glass inserts items 5244...

item	Ø / height in cm	for cloches / inlays
4734.01	23/3	Ø 18.5/16.7 cm
4734.02	27/3	Ø 22.5/20.7 cm
4734.03	30.5/3	Ø 26/24.2 cm
4734.04	34.5/3	Ø 30/28.2 cm



5190+4880.18 5190+4880.26



platter/plate "Pulsar"
glass, 6 mm thick, dark grey, Ø inside 18 cm, suitable for cloches items 4880.18 and 4880.26

item	Ø in cm
5190	31.5



The glass cloches, which are available in 6 sizes (diameters 9 cm to 30 cm), delight by their high quality and unusual form! The presentation of fine truffles, an exclusive choice of cheese or simply a single praline - there is a fitting size for each purpose!

The lightweight cloches by Zieher are heat resistant, dishwasher safe and very easy to handle for the guests. Each item is manufactured by hand and therefore shaped individually.

The raw material for these items is borosilicate glass, which is mainly used for laboratory dishes. Its main features are a great resistance against heat and changes in temperature as well as a high break resistance. A wine cooler of the same design is available on page 60/61.



The cheese presentation system "Solid" is available on pages 112 and 113.

"Cuspis"

The cloches and porcelain coasters of the series "Cuspis" are inspired by the nuts of the oak tree. The ball-shaped handle at the tip of the cloches allows for an uncomplicated handling of these classy covers. The unglazed outside of the porcelain coasters with its distinctive texture is reminiscent of acorn caps. The coaster can be used on both sides. When used as a plateau plate, the dishes move closer to the guest, while the filigree glass cloche protects the presented delicacies and puts them in the limelight. Used as a bowl, it offers space for gravies, sauces and more



glass cloche "Cuspis"
borosilicate glass, transparent, handblown, star-shaped ball handle

item	for plate/bowl	Ø in cm	height in cm
4940.08	4389.09	8.5	12.5
4940.10	4389.11	10.5	14.5
4940.25	4389.25PB	25	32.5



plateau plate/small bowl "Cuspis"
china, white, inside and useable area (plateau Ø approx. 6 cm/8 cm) glazed, outside biscuit, also useable as a bowl

item	Ø in cm	height in cm	content in l
4389.09	9	3	0.1
4389.11	11.5	3.5	0.18



plateau plate/bowl "Cuspis"
china, white, inside and useable area glazed, outside biscuit, useable on both sides, for cloches items 4940.25 and 4940.10 (bottom side), in black gift box

item	Ø in cm	height in cm	content in l
4389.25PB	25	2.8	0.8

If the item is used upside down as a plate, the two rings on the plate's underside can be used to separate the prepared dish into different sections and the cloches of the "Cuspis" series may also be used with it (4940.10 on the inner ring, 4940.25 on the outer ring).



Little somethings perfectly staged!

The thick bottom of the hand-blown bowl leads to a blow-up effect when used as a cloche!



glass bowl/cloche
clear glass, handblown, for ring "SelectionA." item 4681.S (please order separately)

item	Ø / height	content in l	PU
5418	9	0.2	6pcs



ring "SelectionA."
silicone, Ø 8.3 cm, for anti-slip stand of bowl item 5418

item	colour	PU
4681.S	black	6pcs



glass cloche
crystalline glass, transparent, handblown, for a utility space of Ø 9.5 cm or Ø 14.5 cm respectively

item	Ø in cm	height in cm	PU
5482.10	10.5	approx. 13	2 pcs
5482.15	15.5	approx. 19.5	1 pc



The plates made of china are available on page 227.

Cloches

The glass NOSTALGIC of the VISION series is available on page 187.



The glasses of the series VISION are available on pages 186 and 187, the gourmet plate "Pulsar" on page 151.





Food: Pâtisserie Walter
(www.patisserie.de)



glass cloche

clear glass, handblown, with handle, for glass stands items 4854... (please order separately)

item	Ø in cm	height in cm
4853	10.5	11.5



glass stand

clear glass, handblown, with round foot (Ø 8 cm) and platform (Ø 11.5 cm), for glass cloche item 4853

item	height in cm
4854.01	13
4854.02	16.5
4854.03	23



glass cloche

clear glass, for pastry/cake stand items 5349...

item	Ø in cm	height in cm
5350.16	16	13
5350.23	23	16.5
5350.27	27.5	20.5



pastry/cake stand

clear glass, with foot

item	Ø in cm	Ø stand in cm	height in cm
5349.21	21	10.5	9.5
5349.28	28	13	11.5
5349.33	33.5	13	11



glass cloche

clear glass, handblown, with round handle, for coaster "Solid" items 4734...

item	Ø in cm	height in cm
4850	18.5	31
4851	22.5	37
4852	26	43



coaster/glass insert

clear glass, 4 mm thick, round, edge polished and deburred, with 4 transparent silicone feet

item	Ø in cm	for coaster "Solid" item
5244.17	16.7	4734.01
5244.21	20.7	4734.02
5244.24	24.2	4734.03
5244.28	28.2	4734.04



coaster "Solid"

walnut, food-safe sealed, not dishwasher-safe, stackable, for glass cloche items 4850, 4851, 4852 and 4880... and glass inserts items 5244...

item	Ø / height in cm	for cloches / inlays
4734.01	23/3	Ø 18.5/16.7 cm
4734.02	27/3	Ø 22.5/20.7 cm
4734.03	30.5/3	Ø 26/24.2 cm
4734.04	34.5/3	Ø 30/28.2 cm



charger plate, glass

special hardened safety glass, 4 mm thick, round, edge polished, dishwasher-safe, rubber feet included (adhesive), underside scratch-proof

item	version	Ø in cm
1669.33	black glass	33
1671.33	white glass	33



Each cloche is handblown and handcrafted. In contrast to our cloches made of borosilicate glass (page 175), these items are made of a massive glass drop. Therefore air inclusions and minor streaks cannot be avoided completely. Each cloche is unique, the result is a harmonic enlivenment of the buffet for an attractive price



Example of application: Presentation of a premium beer type

These items are handblown and handcrafted. Minor size tolerances are normal and inevitable!

35 years of ZIEHER – a story of success from 1986 to 2021



Starting years as trading company

1986 – 1996

In 1986 Manfred Zieher and his wife Christa founded the company. Traditional gastronomic items were offered under the name MAC and soon also presented in an own catalogue and on shows. In 1994 the company was finally named Zieher.



Wine and more

Since 2015

The cornerstone for a collection for ambitious wine lovers was laid in 2015 with the "Vision" series. These unique wine glasses have been developed together with sommelier Silvio Nitzsche from Wein | Kultur | Bar Dresden. In 2017 the range has been extended by the extraordinary decanters "Eddy" and "Star" and has been made accessible through specialised retailers also for end users.



Establishment as gastronomic partner

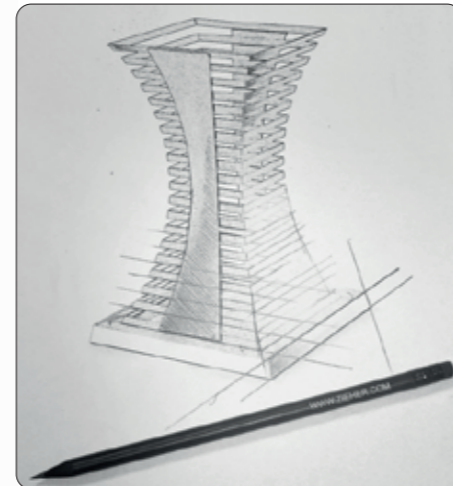
1997 – 2005

In the second decade, Zieher became established as partner of gastronomy specialised shops. Since 1996 the company is located in Himmelkron, the prominent brand logo was registered in 2004 as a word and figurative mark.

Focusing and generational change

Since 2020

Zieher is focussing on their skills and positioning themselves more and more as an extravagant design manufacturer for luxury food presentation and wine glasses. The professional range has been tightened and the range for end users has been reduced to the FOR WINE LOVERS range. In 2021 the generational change has been carried out and the company has been handed over to the children Dominik Zieher, Jennifer Hübsch and Oliver Zieher (ltr).



Zieher today

In 2022 Zieher is present in 5 * Hotels and top restaurants in more than 90 countries and appreciates the long lasting, often amicable relationship with clients, partners and suppliers. As partners from the very beginning, a very special thanks

to Thomas Dötzer from Dötzer Restauration Bayreuth for his extraordinary culinary expertise and to Photographer Gerd Preiss for the artful composition and the exclusive styling of the Zieher image library.

Extravagance designed by Zieher

Since 2006

The first Zieher designed products were released in 2006. Individual creations in the luxury segment emerged from the close cooperation with renowned chefs and the inspiration by their artistry. Besides the cooperation with well-known Designers such as Itamar Harari for instance, many products bear the signature of Oliver Zieher. In 2009, "Skyline" - a benchmark for extremely flexible buffet systems - has been developed.



Itamar Harari



Silvio Nitzsche



Gerd Preiß

Thomas Dötzer

WWW.ZIEHER.COM



21, Markarian Building, Street 401, Mkalles
T: +961 1 694 194 M: +961 76 444 660
P.O.Box 55240 Sin El Fil, Lebanon
E-mail sales@mghotelsupplies.com
f MG SUPPLIES @ MG.SUPPLIES